

# Telescopic Tractors

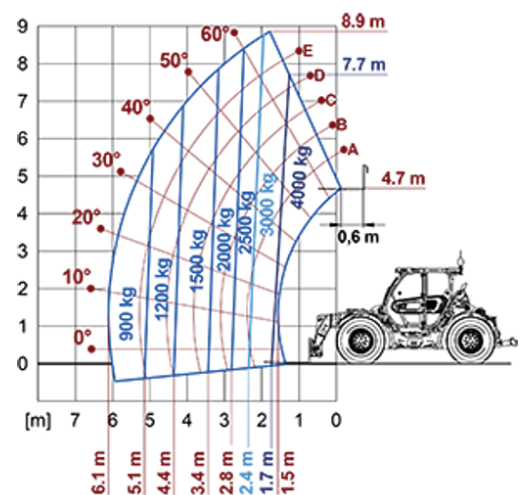
Regulatory area: AU

MF44.9

**MERLO**



MODEL	MF44.9CS-170EE-CVT
A - Length (mm)	5570
C - Wheelbase (mm)	2950
F - Ground clearance (mm)	440
H - Width (mm)	2400
M - Cab width (mm)	1010
P - Height (mm)	2590
S - Fork steering range (mm)	5020



MODEL	MF44.9CS-170EE-CVT
<b>PERFORMANCE</b>	
Unladen weight (kg)	9450
Maximum load capacity (kg)	4000
Lift height (m)	8.9
Maximum reach (m)	6.1
Boom side-shift (mm)	—
Frame levelling (%)	+/-8
Boom section	3
<b>POWERTRAIN</b>	
Engine	FPT NEF45
Range/Cylinders (l)	4.5/4
Engine power (kW/HP)	125/170
Anti-pollution technology	Stage II
Reversible Fan	○
Maximum speed (km/h)	40
Fuel tank capacity (l)	140
AdBlue tank capacity (l)	—
Hydrostatic transmission EPD	CVTronic
Electronic joystick	●
Axles	Axial
Brakes	Dry discs
<b>HYDRAULIC</b>	
Delivery / pressure (bar-l/min)	150-210
Hydraulic oil tank capacity (l)	100
<b>CAB</b>	
ASCS	Full
FOPS/ROPS Cab	●
Tilting cab	—
<b>CONFIGURATION</b>	
Hydropneumatic Suspension CS Merlo	●
Frame suspension	—
Permanent four-wheel drive	●
Three steering way	●
Standard tyres	500/70-24"
Hydraulically controlled stabilizers	—
Turret rotation	—
PTO (rpm)	540/1000
3-point rear linkage (kg)	CAT III -7000 Kg

— NOT AVAILABLE • ● STANDARD • ○ OPTIONAL

Your Merlo dealer



**MERLO S.P.A.**

Via Nazionale, 9  
12010 S. Defendente di Cervasca, (Cuneo) Italia  
Tel. +39 0171 614111

info@merlo.com www.merlo.com

Release 13/03/2026 - 10:5

Data, specifications and illustrations contained in this document are indicative and not binding. Merlo S.p.A. pursues a policy of continuous research and development; therefore, products may differ from those described or be subject to change without prior notice. The products shown may include optional equipment.